



Flight Plan & Site Survey

Created using **RPAS Wilco®**

Reference No:

3ADD66

Title:

Spectrum 48th Avenue

Pilot Name:

Pilot Certificate:

Flight Start:

October 3, 2024 11:51 AM

Flight End:

October 3, 2024 1:51 PM

Flight Area (Latitude):

49° 5' 27.77" N (49.091)

Flight Area (Longitude):

122° 44' 56.06" W (-122.749)

Altitude - Radius:

Alt: 1400 ft - **Rad:** 2963.2 m (1.6 nm)

Classification:

UNCONTROLLED

FIR - Contact:

CZVR - 604-586-4500

Please ensure you received all required authorizations prior to flight.

Disclaimer

This Site Survey was created using RPAS Wilco by AIM Robotics. The flight plan contained is intended only for RPAS flights on the date/time and location specified. The user accepts all responsibility for the accuracy and completeness of the information contained.

For the complete Terms & Conditions, see

<https://rpaswilco.com/#/tnc>

Included

Site Survey

Obstacles (if available)

Nearby Aerodromes

Canadian Aviation Regulations

GFA

Aerodrome Supplements

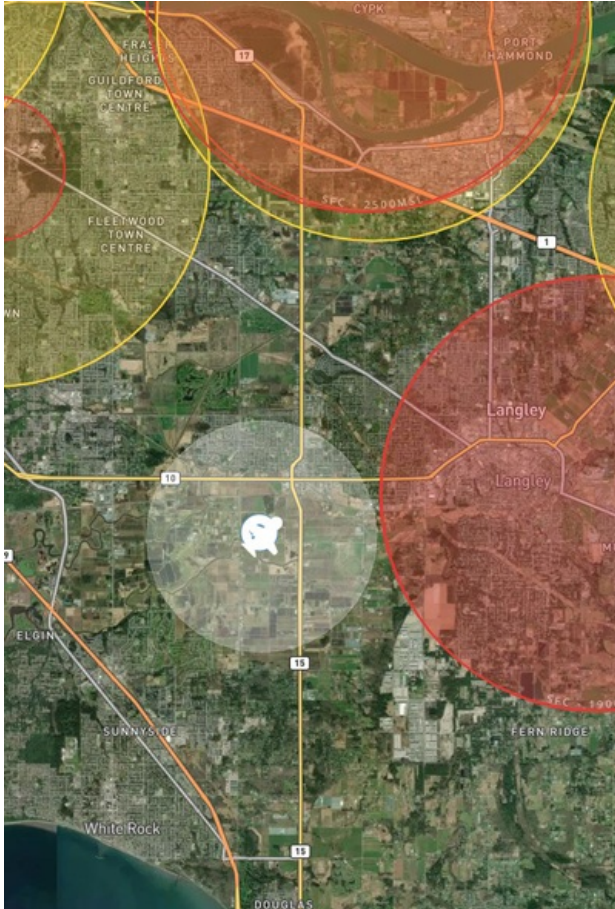
-METAR & TAF (if available)

-NOTAMS

-CFS





Flight Map



RPAS Specification

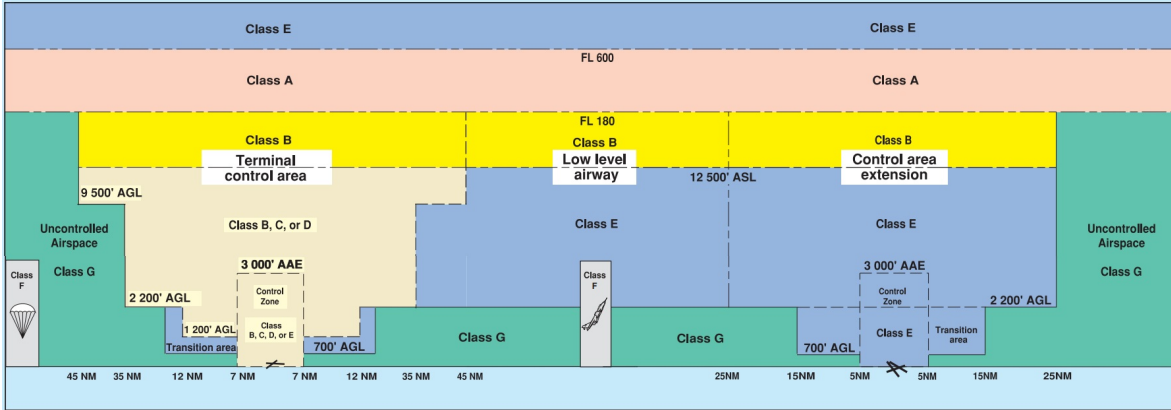
- **Manufacturer:**
MAAC
- **Model:**
MODELAIRPLANE
- **Registration Number:**
- **Eligible for advanced operations:**
Yes
- **Manufacturer RPAS safety assurance:**
 - Controlled Airspace: YES
 - Near People: NO
 - Over People: NO

MAP Details

	Latitude	Longitude
 MODEL	49° 5' 27.77" N (49.091)	122° 44' 56.06" W (-122.749)
 Pilot	49° 5' 31.37" N (49.092)	122° 44' 59.66" W (-122.7499)



Airspace Classification



Overlying Airspaces

Class	Name	Floor	Ceiling
E	V342 Airway	2200AGL	12500MSL
B	V342 Airway	12500MSL	18000MSL
E	Pitt Meadows, BC CAE	1500MSL	12500MSL
B	Pitt Meadows, BC CAE	12500MSL	18000MSL
E	T775 Airway	2200AGL	12500MSL
B	T775 Airway	12500MSL	18000MSL
C	Vancouver, BC TCA	2500MSL	4500MSL
C	Vancouver, BC TCA	4500MSL	6500MSL
C	Vancouver, BC TCA	6500MSL	8500MSL
C	Vancouver, BC TCA	8500MSL	9500MSL
C	Vancouver, BC TCA	9500MSL	12500MSL
B	Vancouver, BC TCA	12500MSL	18000MSL
E	T629 Airway	2200AGL	12500MSL
B	T629 Airway	12500MSL	18000MSL
E	T800 Airway	2200AGL	12500MSL
B	T800 Airway	12500MSL	18000MSL

Nearest Aerodromes & Distance from Operation

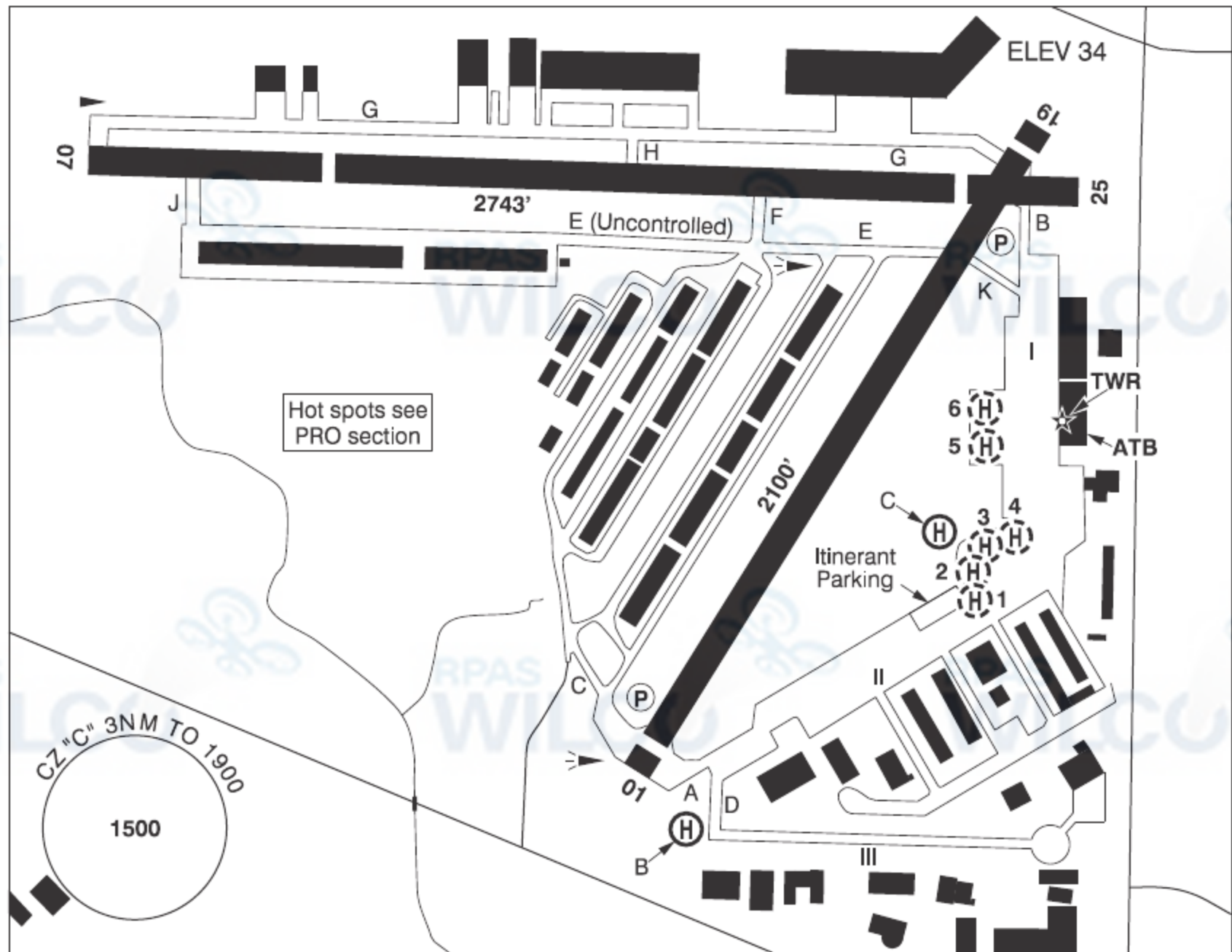
LANGLEY REGIONAL (CYNJ - AERODROME/HELIPORT - Cert)	Lat: 49.101	Long: -122.631	8.656KM	4.67NM	E
PITT MEADOWS (CAJ8 - WATERDROME -)	Lat: 49.209	Long: -122.709	13.433KM	7.25NM	N
DELTA HERITAGE AIR PARK (CAK3 - AERODROME - Reg)	Lat: 49.079	Long: -122.938	13.836KM	7.47NM	W
PITT MEADOWS (CYPK - AERODROME/HELIPORT - Cert)	Lat: 49.216	Long: -122.713	14.137KM	7.63NM	N
SURREY MEMORIAL HOSPITAL (CVS3 - HELIPORT - Cert)	Lat: 49.176	Long: -122.844	11.709KM	6.32NM	NW

BRITISH COLUMBIA

AERODROME/FACILITY DIRECTORY

LANGLEY REGIONAL BC

CYNJ



REF	N49 06 03 W122 37 51 Adj 17°E (2013) UTC-8(7) Elev 34' VTA A5004 LO2 T1 CAP
OPR	Township of Langley 604-534-7330 APM 1500-0130Z† Cert
PF	B-1,2,3 C-4,5,6
CUST	AOE/CAN
FLT PLN	
FIC	Kamloops 866-WXBRIEF (Toll free within Canada) or 866-541-4101 (Toll free within Canada & USA)
ACC	Vancouver IFR 604-586-4590/4591; IFR tng flts PPR ctc 604-586-4592; ctc Victoria Tml 604-586-4561 for IFR clnc when TWR clsd.
DUAT	APM'S office
WX	LWIS H24 LAWO 1630-0230Z (DT 1530-0330Z)
SERVICES	
FUEL	100LL (self-serve), JA-1 (1530-0100Z† by truck, 604-360-2306)
OIL	All
S	1,2,3,4,5

BRITISH COLUMBIA

AERODROME/FACILITY DIRECTORY

LANGLEY REGIONAL BC (Cont'd)

CYNJ

RWY DATA	Rwy 07(075°)/25(255°) 2743x75 ASPH Thld 07 displ 654'. Thld 25 displ 343'. Avbl dur twr oprg hrs only. Ngt ops not auth. Rwy 01(015°)/19(195°) 2100x75 ASPH Thld 01 displ 104'. Thld 19 displ 96'. Rwy 01 preferred rwy when twr clsd. Rwy 01 designated calm wind rwy.
RWY CERT	Rwy 01/19 AGN I Rwy 07/25 AGN I
TWY	Twy E uncontrolled west of Twy F.
APRON	Apron I & II wing tip clearance less than 50' wide in some areas
RCR	Twr 604-514-9324 RSC 1600-0100Z† No win maint Aprt rstd to a max wt of 12,500 lbs exc with opr auth PLR
HELI DATA	B - FATO 110' dia ASPH TLOF 28' dia ASPH Safety Area 143' dia Max heli length 58' (exc with opr appr) 20,500 lbs. Medevac flt only 06-15Z†. C - FATO/TLOF 85' dia ASPH Safety Area 110' dia Max heli overall length 59' (exc with ops appr). 20,500lbs. Day only. Parking Pad 1: 31' dia CONC 3600 lbs For temporary prkg and refueling only (100LL only). Parking Pads 2-4: 31' dia CONC 3600 lbs Private. Parking Pads 5 & 6: 66' dia ASPH 14,000lbs Max heli overall length 55'
LIGHTING	01-(TE ME) P1 4.5°, 19-(TE ME) AP 4.0° Lgts on automatic timer single setting after twr hrs to 07Z†. FATO-B: RW no aiming pt (LO) ARCAL-119.0 type J (FATO-B use ONLY, No ARCAL on rwy)
COMM	
ATIS	124.5 1-877-517-2847 1630-0230Z (DT 1530-0330Z)
GND	121.9 1630-0230Z (DT 1530-0330Z)
TWR	119.0 (V) 1630-0230Z (DT 1530-0330Z) (emerg only 604-534-9443)
MF	tfc 119.0 0230-1630Z (DT 0330-1530Z) 3NM 1900 ASL (CAR 602.98)
NAV	
VOR	PITT MEADOWS YPK 112.4 N49 12 57 W122 42 54 (44')

BRITISH COLUMBIA

AERODROME/FACILITY DIRECTORY

LANGLEY REGIONAL BC (Cont'd)

CYNJ

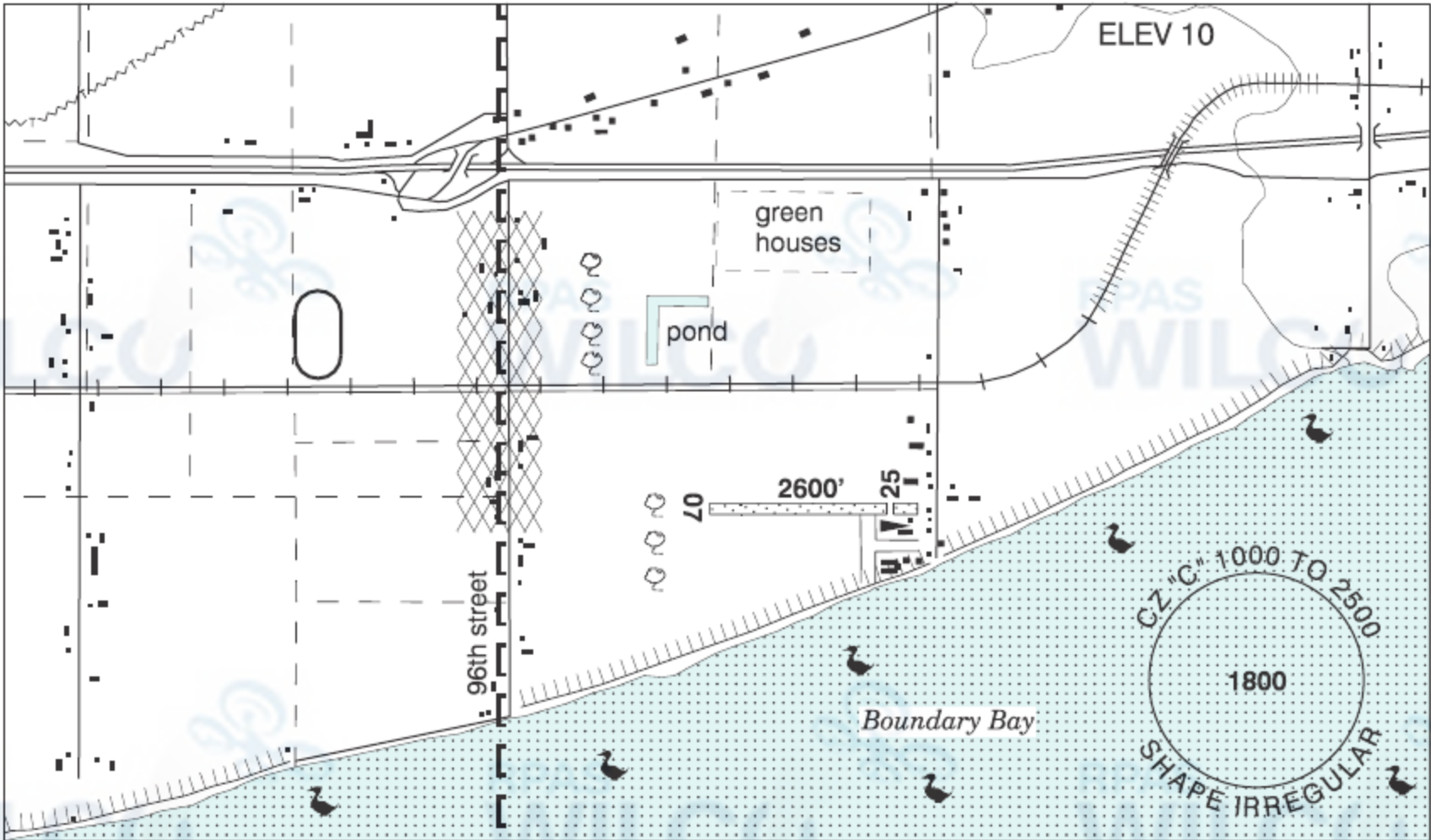
PRO	<p>No circuits on any rwy from 2130-0800 local time.</p> <p>Pilots should refer to Canadian Airport Charts (CAC) to obtain details on established hot spots, prior to operating on maneuvering areas. CAC are available for free on the NAV CANADA website.</p> <p>ALL DEPARTURES: Ctc 121.9 after run-up or prior to entering twy with TYPE / IDENT / POSITION / INTENTIONS / RUN UP COMPLETE</p> <p>RWY 19 DEPARTURES: Best rate of climb. Climb rwy hdg til S of Fraser Hwy. Turn left track aprx 160° to follow green belt. Make crosswind turn S of 44th Ave over Langley Golf Centre. Make turn to downwind E of 224th St towards Tall Timbers Golf Course. Follow VTPC FIXED WING CIRCUITS RWY 19. Avoid flt over built up areas on crosswind and downwind legs. Circuit altitude 1000 ASL.</p> <p>RWY 25 DEPARTURES: Rgt hand circuits (CAR 602.96). Best rate of climb. Rwy 07/25 shall not be used when twr is clsd.</p> <p>VFR ARR/DEP ROUTES: See FIXED WING ARR/DEP VTPC</p> <p>ATS REQUIREMENTS: All VFR acft arriving, departing or transiting the Vancouver or Victoria Tower Class C or D airspace require a transponder code.</p> <ul style="list-style-type: none">- All acft departing Vancouver or Victoria Intl (including Water Aerodrome) call Kamloops FIC at 866-541-4101 or PAC RDO 122.5 or 123.15 for code assignment at least 30 min prior to flight or file a VFR Flight Plan/Flight Itinerary.- All acft arriving Vancouver, Victoria Intl (including Water Aerodrome) or transiting Vancouver or Victoria Control Zones obtain a code from one of the following ATS units: Vancouver Harbour, Nanaimo, Victoria Harbour, Boundary Bay, Langley, Abbotsford or Pitt Meadows or call Kamloops FIC at 866-541-4101 or PAC RDO 122.5 or 123.15.- All acft arriving Victoria Intl from a non NAV CANADA site call Kamloops FIC at 866-541-4101 or PAC RDO 122.5 or 123.15 for code assignment at least 30 minutes prior to flight or file a VFR Flight Plan/ Flight Itinerary.
HELI	<p>Day: East route dep expedite climb to 600 ASL prior to 232nd street. East of 232nd street commence climb to 1000 ASL. East route arr maintain 1000 ASL descend to 600 ASL prior to 232nd street. South East route dep expedite climb to 1000 ASL prior to 216th street. South East route arr maintain 1000 ASL to 216th street. North route dep expedite climb to 600 ASL prior to Milner. North of Milner commence climb to 1000 ASL. North route arr maintain 1000 ASL descend to 600 ASL prior to Milner.</p> <p>Night: North route arr/dep overfly Rwy 01 min alt 1000 at Milner.</p> <p>West route arr/dep overfly Fraser hwy min alt 1000 ASL at bypass. Medium to hvy heli are only permitted to gnd taxi on Apron III. Hover taxiing on Apron III proh unless coordinated with APM.</p> <p>All Heli must ctc GND 121.9 for transponder code and routing info.</p>
CAUTION	<p>Trees to 100 AGL 250' SE pad B, 250' W Thld 07, and S of Fraser hwy. Only pilots familiar with airport should use airport dur hrs of darkness. Use caution when taxiing on Apron I & II due to min wing-tip clearance and frequent heli ops. Frequent heli arr/dep on Aprons I & II. ATC ctc not rqrd for vehicle and fixed-wing movement on aprons. Heli aiming point at eastern end of Apron III. Ocsl wildlife.</p>

BRITISH COLUMBIA

AERODROME/FACILITY DIRECTORY

DELTA / DELTA HERITAGE AIR PARK BC

CAK3



REF	N49 04 43 W122 56 17 4.5E 17°E (2013) UTC-8(7) Elev 10' VTA A5004
OPR	Recreational Aircraft Association, Chap 85 (DapCom) 604-543-8894, Caretaker 604-722-3791 Reg PPR by phone 604-878-9050
PF	B-1 C-2,3,6 D-4,5
FLT PLN	
FIC	Kamloops 866-WXBRIEF (Toll free within Canada) or 866-541-4101 (Toll free within Canada & USA)
SERVICES	
FUEL	100LL
S	4,5
RWY DATA	Rwy 07/25 2600x75 GRASS Thld 25 displ 300'
RCR	Opr No win maint. Rwy soft when wet
COMM	
ATIS	Boundary Bay 125.5 15-07Z†
ATF	tfc 123.3 2NM below 1000 ASL Excluding that portion which penetrates Boundary Bay class "C" airspace.

BRITISH COLUMBIA

AERODROME/FACILITY DIRECTORY

DELTA / DELTA HERITAGE AIR PARK BC (Cont'd)

CAK3

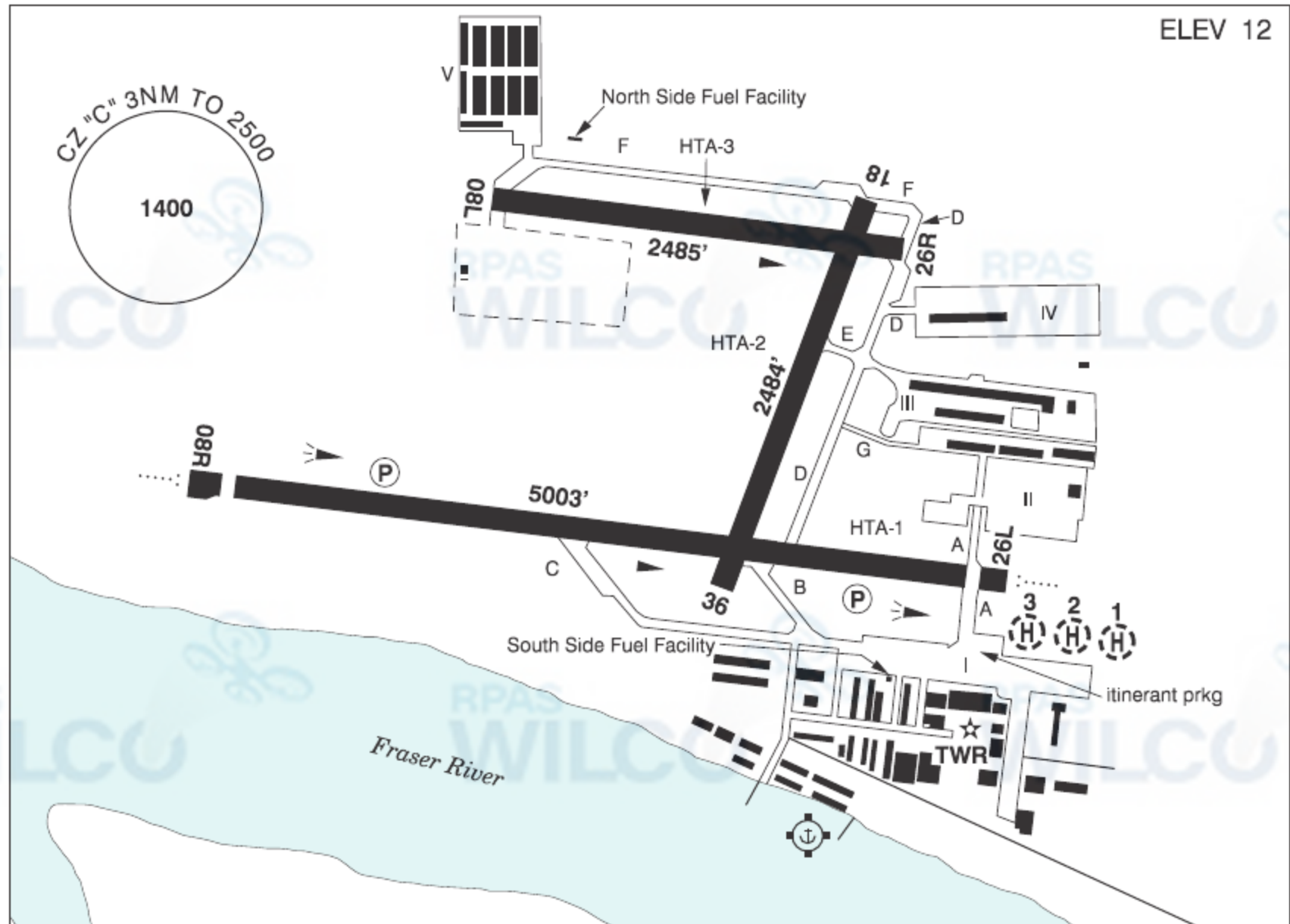
<div>PRO</div> <div>HELI NOISE</div>	<p>Heli tng not auth.</p> <p>Circuit alt 600 ASL. Rgt hand circuits Rwy 25 (CAR 602.96).</p> <p>NOISE ABATEMENT PROCEDURES:</p> <p><u>Departures:</u></p> <p>Rwy 25 Dep: When safe hdg 280°, then further right turn to crosswind to avoid noise sensitive area.</p> <p>Downwind dep auth fr Rwy 25 at 600 ASL. No southbound dep until clear of circuit to E. Avoid flt over dike and adj water area below 600 ASL.</p> <p><u>Arrivals:</u></p> <p>All arr to air park fr seaside. Cross midfield at 600 ASL and join downwind (CAR 602.96).</p> <p>Rwy 07 Arr: Fr downwind, turn on base leg well bfr 96th Street to avoid noise-sensitive area. When S of railway tracks hdg 100° to intercept final apch E of row of trees.</p> <p>Boundary Bay A/D 2.5NM W, obtain clnc prior to entering Boundary Bay CZ. Refer to VTPC. Procedures for crossing the Southern Strait of Georgia within Tml Class C airspace refer to Vancouver Intl VTPC FOR CROSSING THE SOUTHERN STRAIT OF GEORGIA ABOVE 2500FT.</p>
<div>CAUTION</div>	<p>Extremely confined circuit. Trees 750' fr thld Rwy 07, trees and obst adj to thld Rwy 25. Acft unable to accommodate noise abatement procedures and obst avoidance should avoid the air park. Beware of Boundary Bay A/D tfc close to Delta Heritage Air Park.</p>

BRITISH COLUMBIA

AERODROME/FACILITY DIRECTORY

PITT MEADOWS BC

CYPK



REF	N49 12 58 W122 42 48 1SW 17°E (2013) UTC-8(7) Elev 12' VTA A5004 LO2 T1 CAP
OPR	Pitt Meadows Aprt Society 604-465-8977 Cert
PF	A-1,2,3,7 C-4,5,6
CUST	AOE/CAN
FLT PLN	<div>FIC</div> <div>ACC</div> <div>WX</div> <div>Kamloops 866-WXBRIEF (Toll free within Canada) or 866-541-4101 (Toll free within Canada & USA)</div> <div>Vancouver IFR 604-586-4590/4591; IFR tng flts PPR ctc 604-586-4592</div> <div>LWIS H24</div> <div>LAWO 15-07Z†</div>
SERVICES	<div>FUEL</div> <div>OIL</div> <div>S</div> <div>PVT ADV</div> <div>100LL (Cardlock) Helis not auth South Side Fuel Facility unless dollied, JA-1 (by truck)</div> <div>All</div> <div>1,2,3,4,5</div> <div>Integrity Flight Support (by truck) 778-808-3312 1530-0100Z† Mon-Fri exc hols, O/T call out chg; Aeroclub of BC (Cardlock) N & S Side Fuel Facilities 604-465-0446.</div>
RWY DATA	<div>Rwy 08R(080°)/26L(260°) 5003x100 ASPH Thld 08R displ 197' Thld 26L displ 164'</div> <div>Rwy 08L(080°)/26R(260°) 2485x75 ASPH</div> <div>Rwy 18(185°)/36(005°) 2484x75 ASPH</div> <div>RESA: 08R/26L 492'</div>
RWY CERT	<div>Rwy 08R/26L AGN IIIA</div> <div>Rwy 08L/26R AGN I</div> <div>Rwy 18/36 AGN I</div>
TWY CERT	<div>Twy: D, E, F, G AGN I</div>
APRON	<div>Apron I Itinerant prkg N of ATB, E of Twy A (see sketch).</div> <div>Apron III and V Pvt.</div>
RCR	<div>Twr 604-465-9723 PLR/PCN Rwy 08L/26R no win maint</div>

BRITISH COLUMBIA

AERODROME/FACILITY DIRECTORY

PITT MEADOWS BC (Cont'd)

CYPK

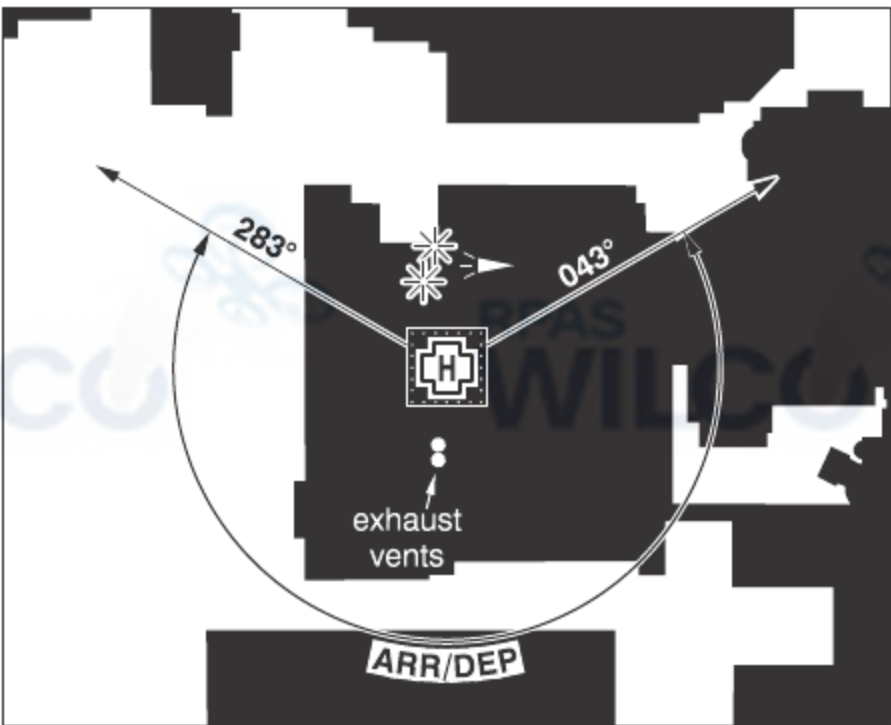
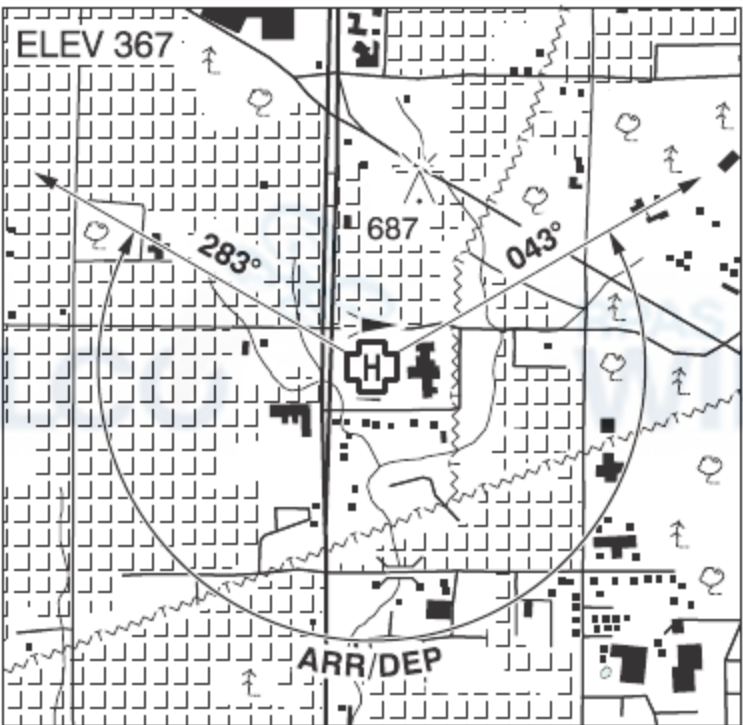
HELI DATA	Parking Pad 1 & 2: TLOF 68' dia ASPH Max heli overall length 57'. Parking Pad 3: TLOF 50' dia ASPH Max heli overall length 42'.
LIGHTING	08R-AO(TE ME) P2, 26L-AO(T ME) P2, 18-(TE ME), 36-(TE ME), 06-14Z± O/T ARCAL-126.3 key mic 3 times within 5 sec for 26L, & 5 times within 5 sec for 08R & 7 times within 5 sec for 18-36 for 15 min duration lgt.
COMM	<div>ATIS GND TWR MF</div> <div>125.0 1-877-517-2847 15-07Z± 123.8 15-07Z± Pitt 126.3 (V) 15-07Z± (emerg only 604-465-9723) tfc 126.3 07-15Z± 3NM 2500 ASL (CAR 602.98)</div>
NAV	<div>VOR</div> <div>YPK 112.4 N49 12 57 W122 42 54 (44')</div>
PRO	<p>Rgt hand circuits Rwys 08R, 18 & 26R (CAR 602.96) circuit hgt 1000 ASL. Seaplane circuits 500 ASL on S side of Fraser River. Procedures for crossing the southern Strait of Georgia within Tml Class C airspace refer to Vancouver Intl, VTPC for Crossing the Southern Strait of Georgia.</p> <p>Due to reduced wing tip clearance, acft total wingspan exceeding 60' are recommended to use Twy A when taxiing to/fr Apron I.</p> <p>ATS REQUIREMENTS: All VFR acft arriving, departing or transiting the Vancouver or Victoria Tower Class C or D airspace require a transponder code. - All acft departing Vancouver or Victoria Intl (including Water Aerodrome) call Kamloops FIC at 866-541-4101 or PAC RDO 122.5 or 123.15 for code assignment at least 30 min prior to flight or file a VFR Flight Plan/Flight Itinerary. - All acft arriving Vancouver Intl (including Water Aerodrome) or transiting Vancouver or Victoria Control Zones obtain a code from one of the following ATS units: Vancouver Harbour, Nanaimo, Victoria Harbour, Boundary Bay, Langley, Abbotsford or Pitt Meadows, or call Kamloops FIC at 866-541-4101 or PAC RDO 122.5 or 123.15. - All acft arriving Victoria Intl from a non NAV CANADA site call Kamloops FIC at 866-541-4101 or PAC RDO 122.5 or 123.15 for code assignment at least 30 minutes prior to flight or file a VFR Flight Plan/Flight Itinerary.</p> <p>NIGHT RESTRICTIONS: - Circuit tng Rwy 08R & 08L not auth 05-15Z± PPR. - Circuit tng Rwy 26L, 26R, 18/36 not auth 06-15Z± PPR. - Turbojet, turbofan and turboprop night circuit tng PPR. - All acft avoid overflight of noise-sensitive areas, unless unable due to crosswind limitations, operational/safety considerations, or as directed by ATC. <u>When Tower Closed:</u> - Rwy 08R/18/26L Dep: Acft climb rwy hdg to 1000 ASL BPOC. Best Rate of Climb. Avoid flt over built-up areas in downwind and crosswind legs. - Rwy 36 Dep: Left hand circuit. When safe turn left to 1000 ASL BPOC. Best Rate of Climb. Avoid flt over built-up areas in downwind and crosswind legs. - Rwy 08L/26R not to be used when twr is clsd unless rqrd due to operational/safety considerations.</p> <p>HELI: All Turbine Heli: Continuous circuits prohibited unless approved by APM. - Arr/dep: Avoid low flt over built-up areas, unless directed by ATC. All Apron I arr/dep rqrd to use marked Apron I heli parking pads 1, 2 and 3 unless prior permission received fr APM. Hover taxiing proh on Apron I BLW adj bldg hgts.</p>
CAUTION	Coyotes in vic of rwys. 160' lit crane 2NM NW of A/D. Quarry blasting ops within 0.6NM radius N49 17 14 W122 39 33 (aprx 4.7NM N of A/D) to 300 AGL. Industrial complex S of 26L apch, do not mistake bldg floodlights for rwy edge lights during low vis conds or ngt ops.

BRITISH COLUMBIA

AERODROME/FACILITY DIRECTORY

VANCOUVER (SURREY MEMORIAL HOSP) BC (Heli)

CVS3



REF	N49 10 33 W122 50 38 Adj 17°E (2014) UTC-8(7) Elev 367' VTA A5004
OPR	Fraser Health Authority 604-677-3672 Cert PPR
PF	B-1,2,3,4 C-5,6
FLT PLN	
FIC	Kamloops 866-WXBRIEF (Toll free within Canada) or 866-541-4101 (Toll free within Canada & USA)
HELI DATA	FATO 86' x 86' non-supporting TLOF 57' x 57' CONC Safety Area 115' x 115' Max heli overall length 57.4' Elevated rooftop 14,690 lbs
RCR	Opr
LIGHTING	RY(LO) green PN
COMM	
ATF	tfc 123.2 1.5NM 1500 ASL
A/G	Hosp Security 158.76 FM 3 min PN
PRO	Arr/dep 043° to 283° fr heli (H1), (CAR 602.96).
CAUTION	High velocity hosp exhaust vents adj, S heli. Elevator penthouse adj, N heli. LED obst lgt not vis through NVG.

Canadian Aviation Regulations

Division III — General Operating and Flight Rules

For full listing please visit : <https://laws-lois.justice.gc.ca/eng/regulations/SOR-96-433/FullText.html#s-901.27>

Visual Line-of-sight

- **901.11 (1)** Subject to subsection (2), no pilot shall operate a remotely piloted aircraft system unless the pilot or a visual observer has the aircraft in visual line-of-sight at all times during flight.
- **(2)** A pilot may operate a remotely piloted aircraft system without the pilot or a visual observer having the aircraft in visual line-of-sight if the operation is conducted in accordance with a special flight operations certificate — RPAS issued under section 903.03.

Procedures

- **901.23 (1)** No pilot shall operate a remotely piloted aircraft system unless the following procedures are established:
 - **(a)** normal operating procedures, including pre-flight, take-off, launch, approach, landing and recovery procedures; and
 - **(b)** emergency procedures, including with respect to
 - **(i)** a control station failure,
 - **(ii)** an equipment failure,
 - **(iii)** a failure of the remotely piloted aircraft,
 - **(iv)** a loss of the command and control link,
 - **(v)** a fly-away, and
 - **(vi)** flight termination.
- **(2)** If the manufacturer of the remotely piloted aircraft system provides instructions with respect to the topics referred to in paragraphs (1)(a) and (b), the procedures established under subsection (1) shall reflect those instructions.
- **(3)** No pilot shall conduct the take-off or launch of a remotely piloted aircraft unless the procedures referred to in subsection (1) are reviewed before the flight by, and are immediately available to, each crew member.
- **(4)** No pilot shall operate a remotely piloted aircraft system unless the operation is conducted in accordance with the procedures referred to in subsection (1).

Site Survey

901.27 No pilot shall operate a remotely piloted aircraft system unless, before commencing operations, they determine that the site for take-off, launch, landing or recovery is suitable for the proposed operation by conducting a site survey that takes into account the following factors:

- **(a)** the boundaries of the area of operation;
- **(b)** the type of airspace and the applicable regulatory requirements;
- **(c)** the altitudes and routes to be used on the approach to and departure from the area of operation;
- **(d)** the proximity of manned aircraft operations;
- **(e)** the proximity of aerodromes, airports and heliports;
- **(f)** the location and height of obstacles, including wires, masts, buildings, cell phone towers and wind turbines;
- **(g)** the predominant weather and environmental conditions for the area of operation; and
- **(h)** the horizontal distances from persons not involved in the operation.

Operations at or in the Vicinity of an Aerodrome, Airport or Heliport

- **901.47 (1)** No pilot shall operate a remotely piloted aircraft at or near an aerodrome that is listed in the *Canada Flight Supplement* or the *Water Aerodrome Supplement* in a manner that could interfere with an aircraft operating in the established traffic pattern.
- **(2)** Subject to section 901.73, no pilot shall operate a remotely piloted aircraft at a distance of less than
 - **(a)** three nautical miles from the centre of an airport; and
 - **(b)** one nautical mile from the centre of a heliport.
- **(3)** No pilot shall operate a remotely piloted aircraft at a distance of less than three nautical miles from the centre of an aerodrome operated under the authority of the Minister of National Defence unless the operation is conducted in accordance with a special flight operations certificate — RPAS issued under section 903.03.

Records

- **901.48 (1)** Every owner of a remotely piloted aircraft system shall keep the following records:
 - **(a)** a record containing the names of the pilots and other crew members who are involved in each flight and, in respect of the system, the time of each flight or series of flights; and
 - **(b)** a record containing the particulars of any mandatory action and any other maintenance action, modification or repair performed on the system, including
 - **(i)** the names of the persons who performed them,
 - **(ii)** the dates they were undertaken,
 - **(iii)** in the case of a modification, the manufacturer, model and a description of the part or equipment installed to modify the system, and
 - **(iv)** if applicable, any instructions provided to complete the work.
- **(2)** Every owner of a remotely piloted aircraft system shall ensure that the records referred to in subsection (1) are made available to the Minister on request and are retained for a period of
 - **(a)** in the case of the records referred to in paragraph (1)(a), 12 months after the day on which they are created; and
 - **(b)** in the case of the records referred to in paragraph (1)(b), 24 months after the day on which they are created.
- **(3)** Every owner of a remotely piloted aircraft system who transfers ownership of the system to another person shall, at the time of transfer, also deliver to that person all of the records referred to in paragraph (1)(b).